

MİMARİ KATALOG
ARCHITECTURAL CATALOGUE

Alüminyum Konvansiyonel Sistemleri
Aluminium Conventional Systems

RSG104+


MİMARİ KATALOG
ARCHITECTURAL CATALOGUE

Alüminyum Konvansiyonel Sistemleri
Aluminium Conventional Systems

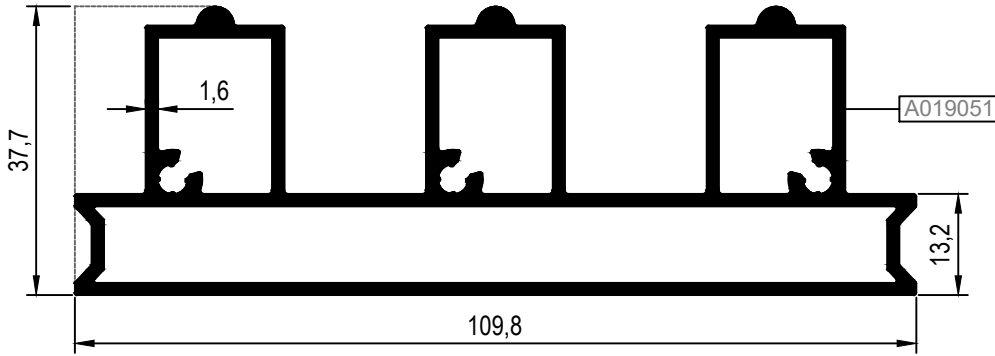
RSG104+

PROFİLLER

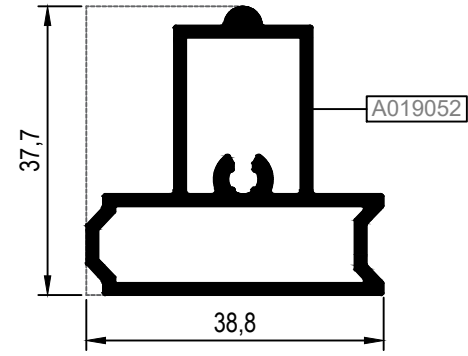
PROFILES

KOD / CODE	AĞIRLIK (kg/m) / WEIGHT	Jxx cm4	Jyy cm4	L m	
RSG104F06	2,005	79,491	10,585	6	
RSG104F07	0,758	2,997	3,750	6	
**RSG104F08	2,890	184,366	13,628	6	
**RSG104F09	3,559	364,343	16,983	6	

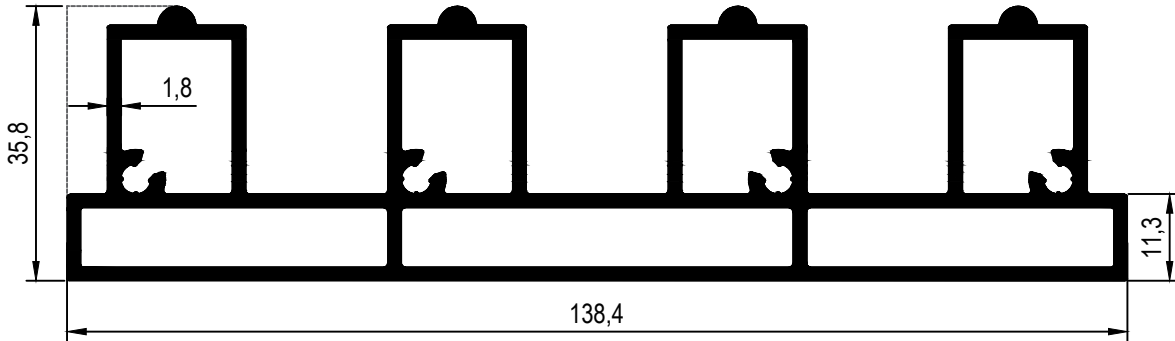
RSG104F06



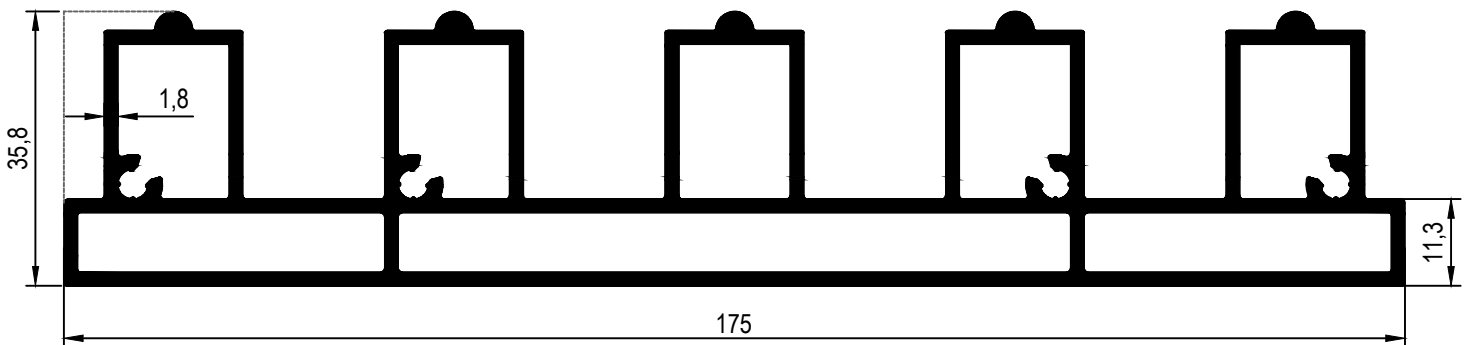
RSG104F07



**RSG104F08



**RSG104F09



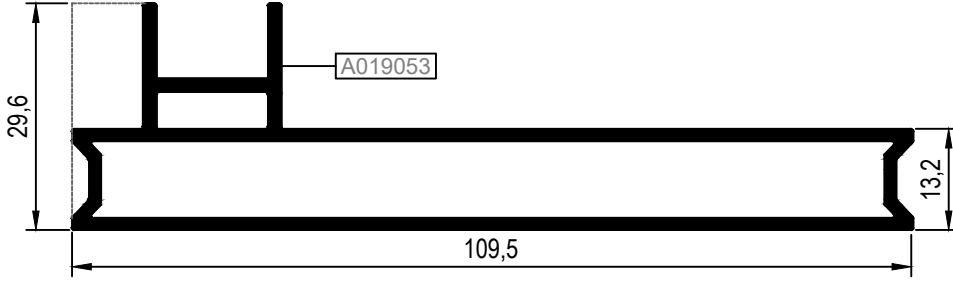
**Kalıp aktif değildir. Sipariş üzerine yapılacaktır.
The die is not active. It will be produced by order.

KASA PROFİLLERİ

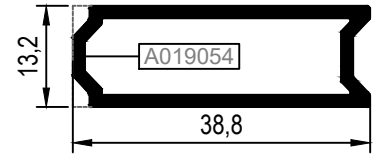
FRAME PROFILES

KOD / CODE	AĞIRLIK (kg/m) / WEIGHT	Jxx cm ⁴	Jyy cm ⁴	L m	
RSG104F10	1,285	55,464	2,742	6	
RSG104F11	0,420	2,455	0,431	6	
RSG104F12	1,571	109,212	3,377	6	
RSG104F13	2,140	233,209	4,102	6	

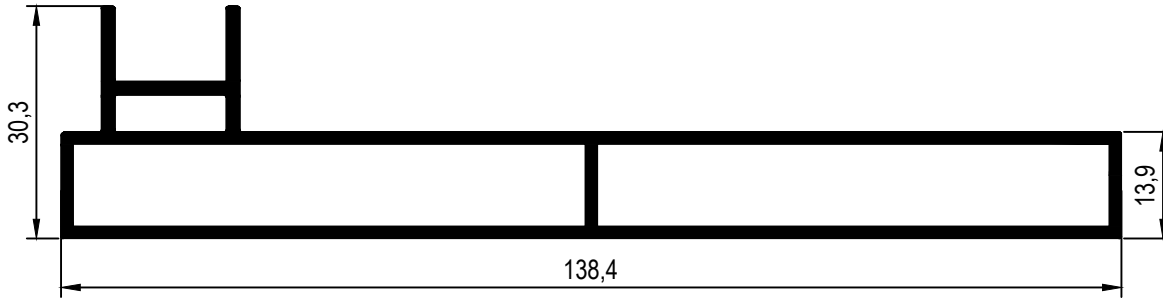
RSG104F10



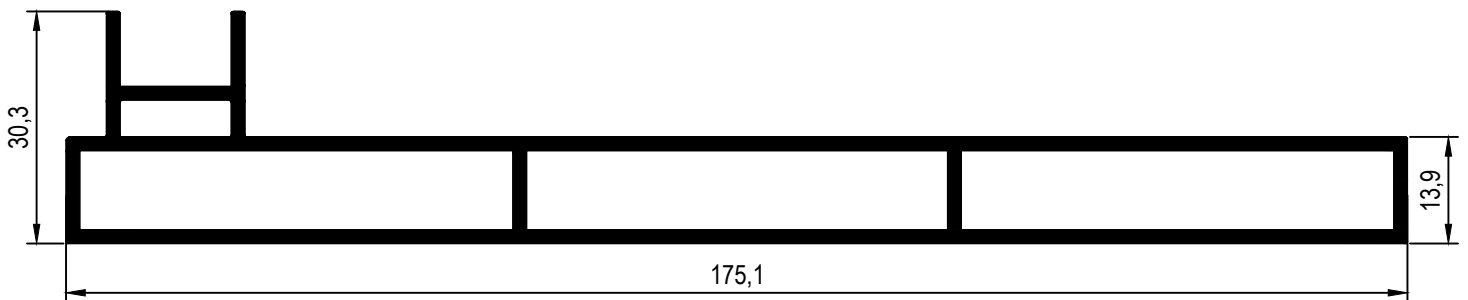
RSG104F11



**RSG104F12



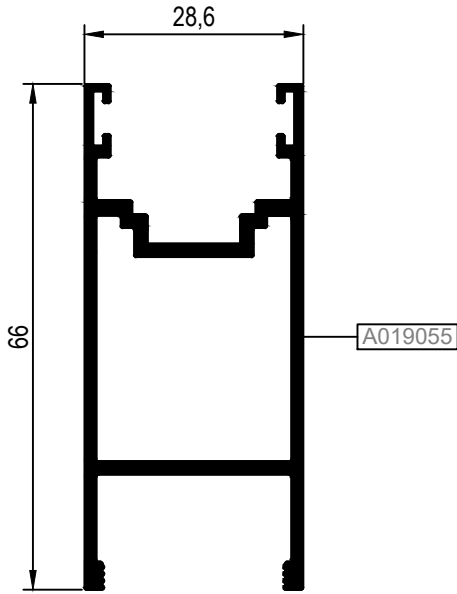
**RSG104F13



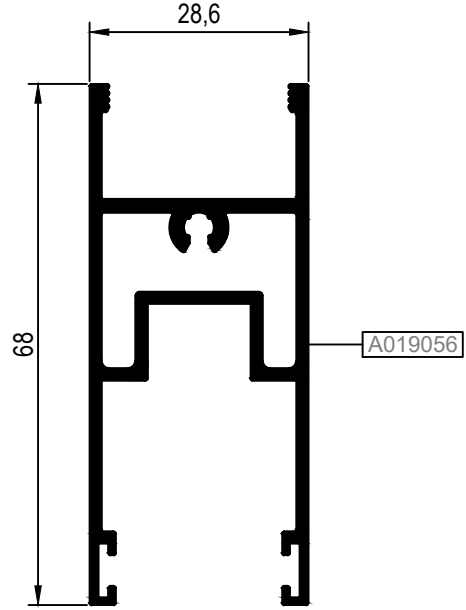
**Kalıp aktif değildir. Sipariş üzerine yapılacaktır.
The die is not active. It will be produced by order.

KOD / CODE	AĞIRLIK (kg/m) / WEIGHT	Jxx cm ⁴	Jyy cm ⁴	L m	
RSG104V06	0,923	4,696	11,694	6	
RSG104V07	1,012	4,854	11,604	6	
RSG104A09	0,596	3,267	1,641	6	

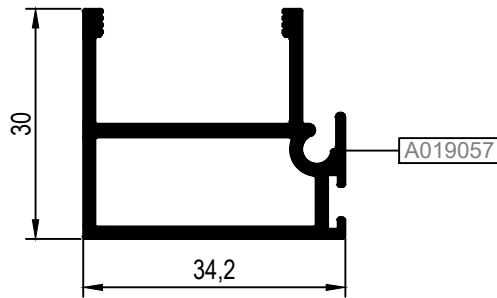
RSG104V06



RSG104V07



RSG104A09



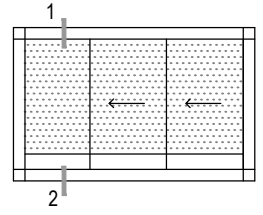
MİMARİ KATALOG
ARCHITECTURAL CATALOGUE

Alüminyum Konvansiyonel Sistemleri
Aluminium Conventional Systems

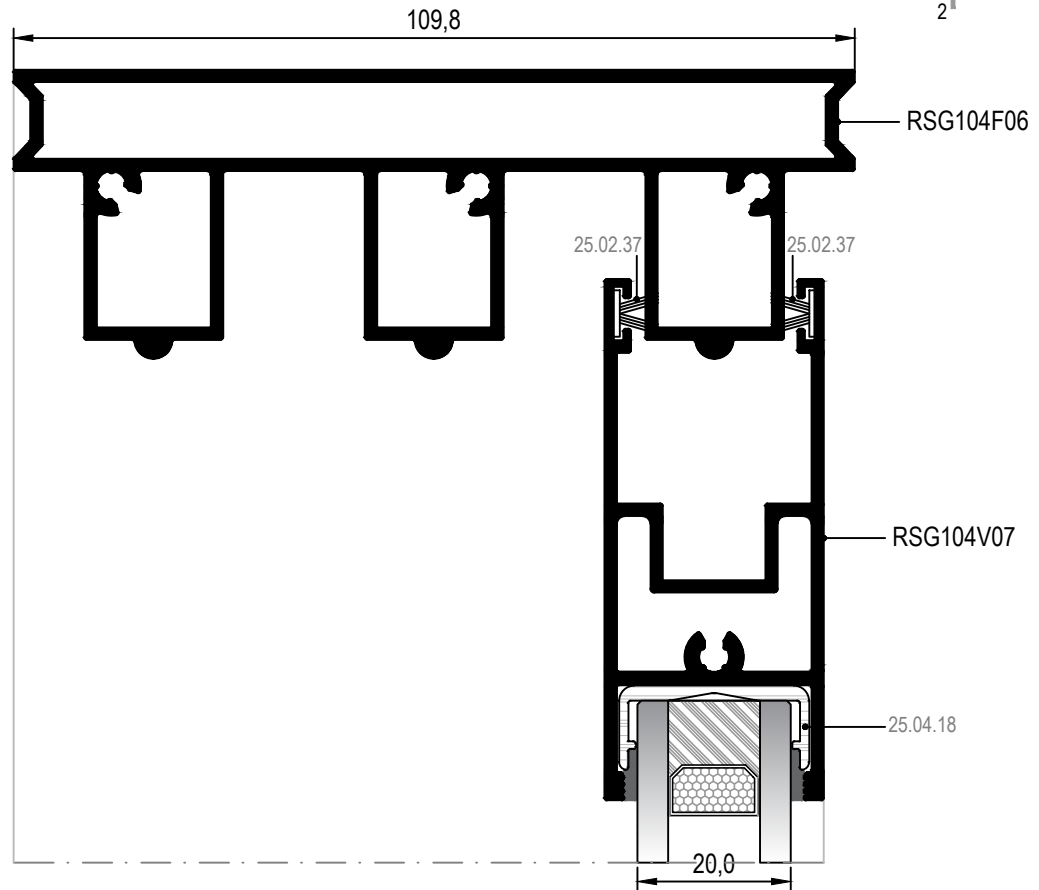
RSG104+

DETAYLAR

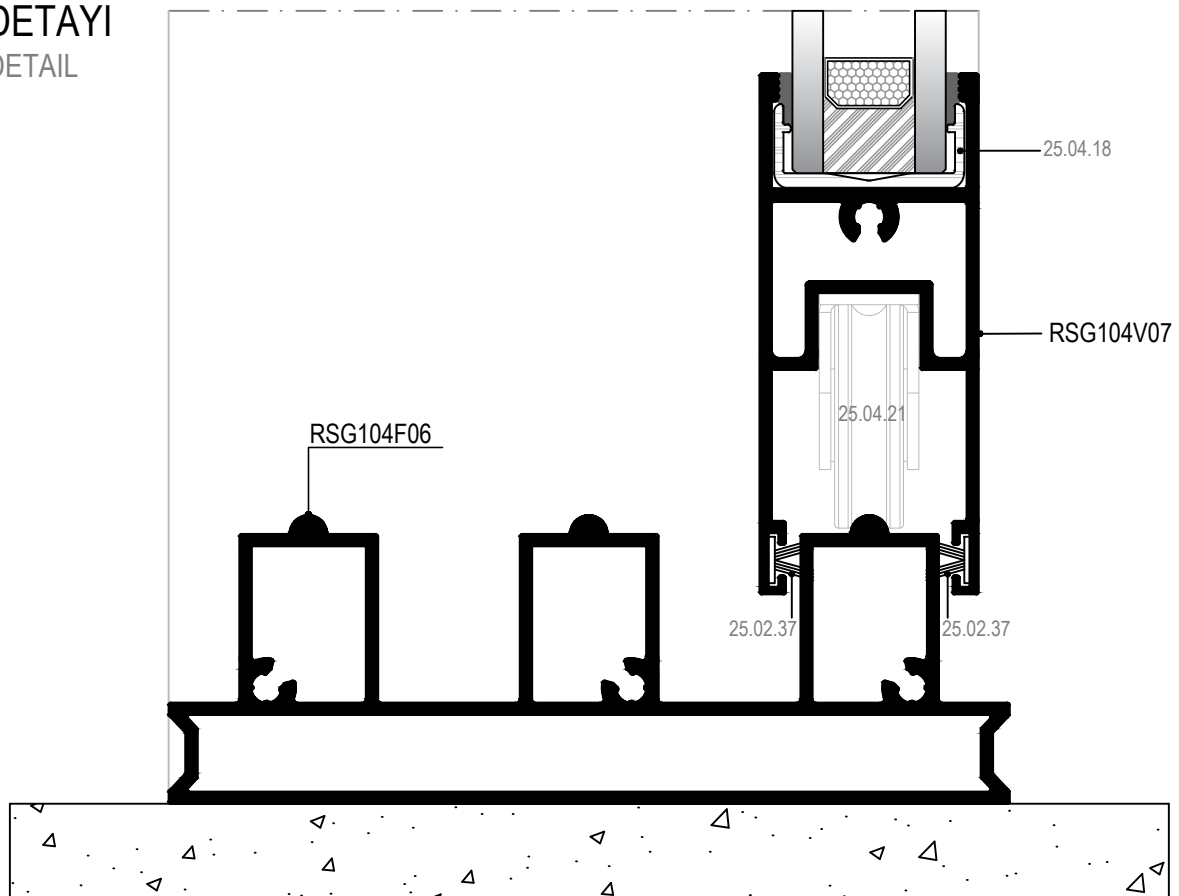
DETAILS

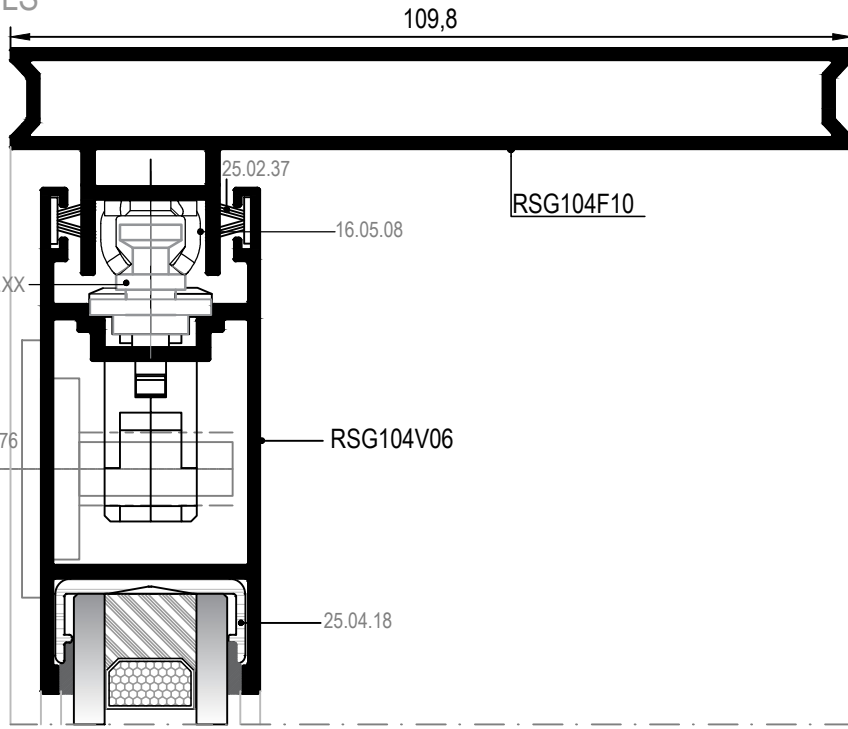


① DETAYI
DETAIL

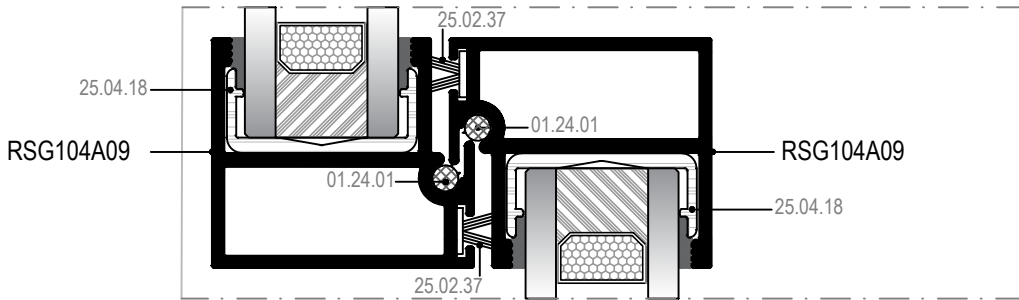


② DETAYI
DETAIL

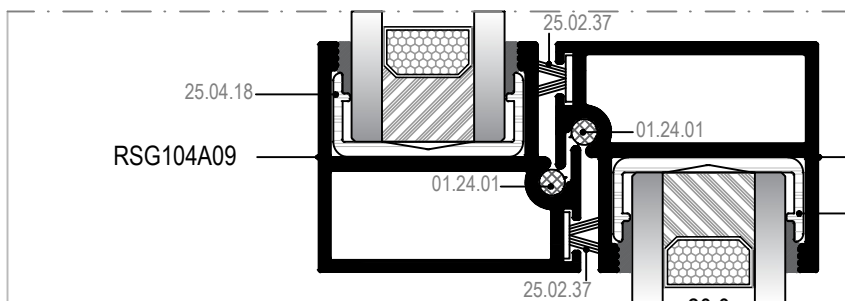




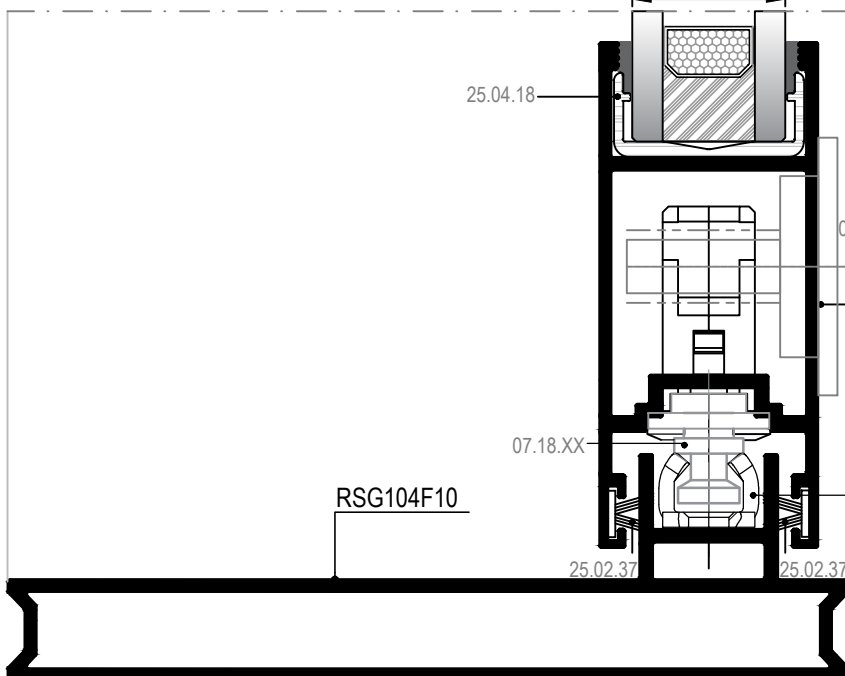
③ DETAYI
DETAIL



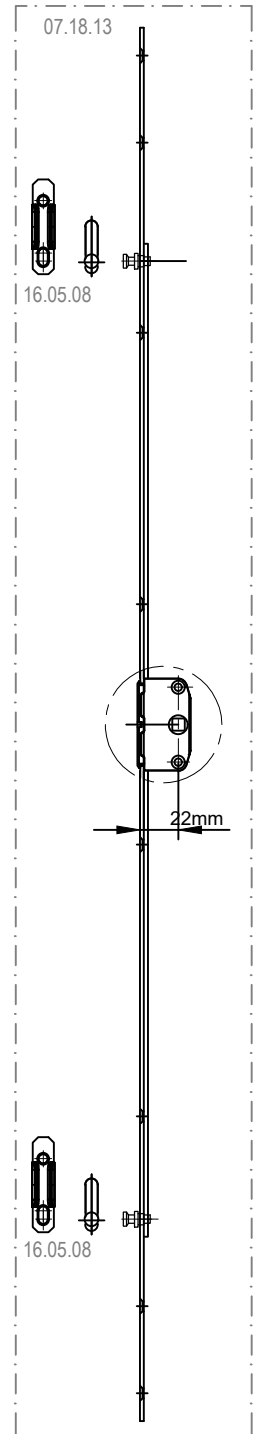
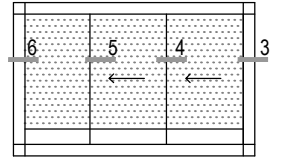
④ DETAYI
DETAIL

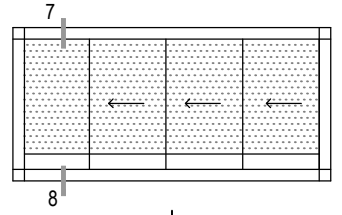


⑤ DETAYI
DETAIL

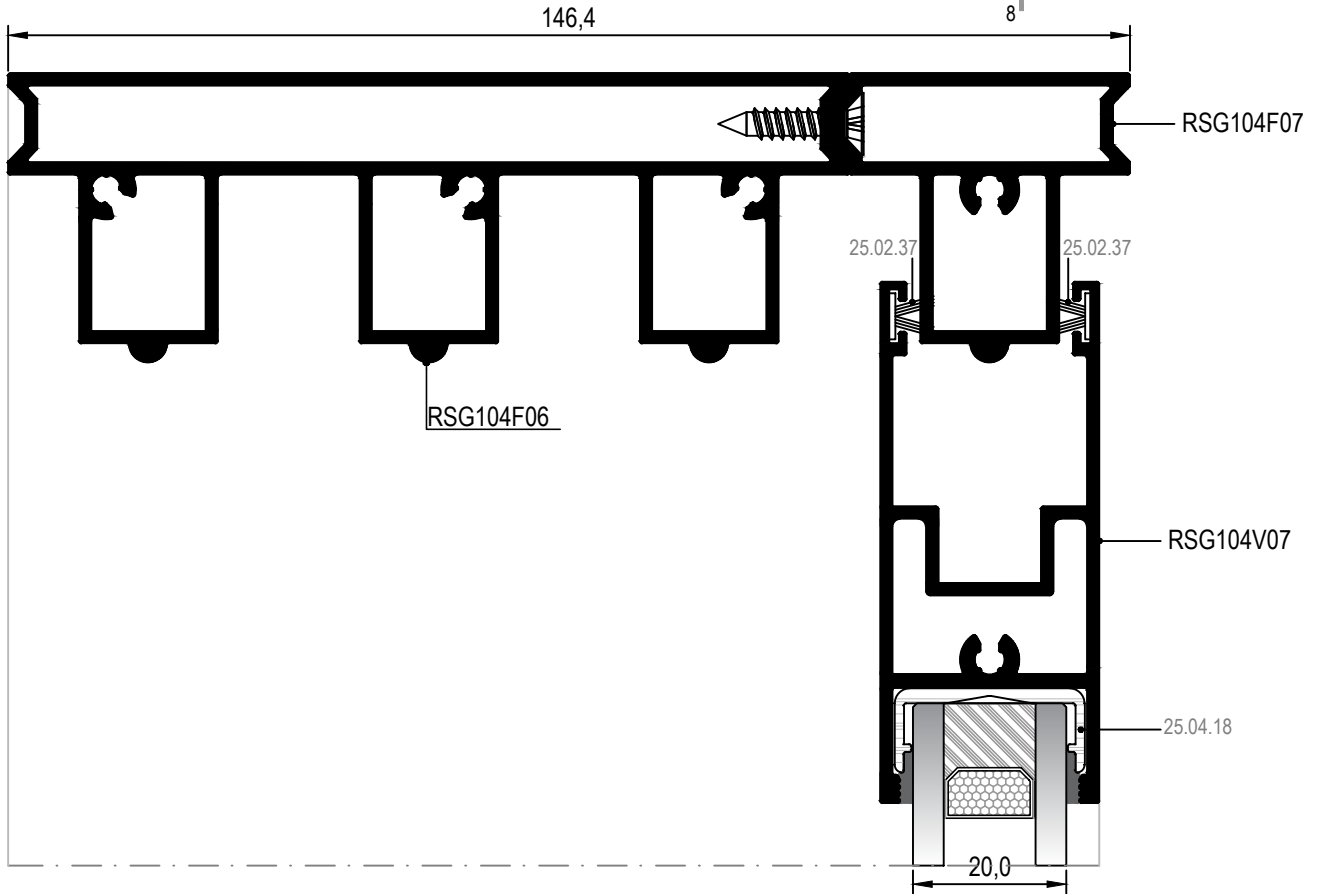


⑥ DETAYI
DETAIL

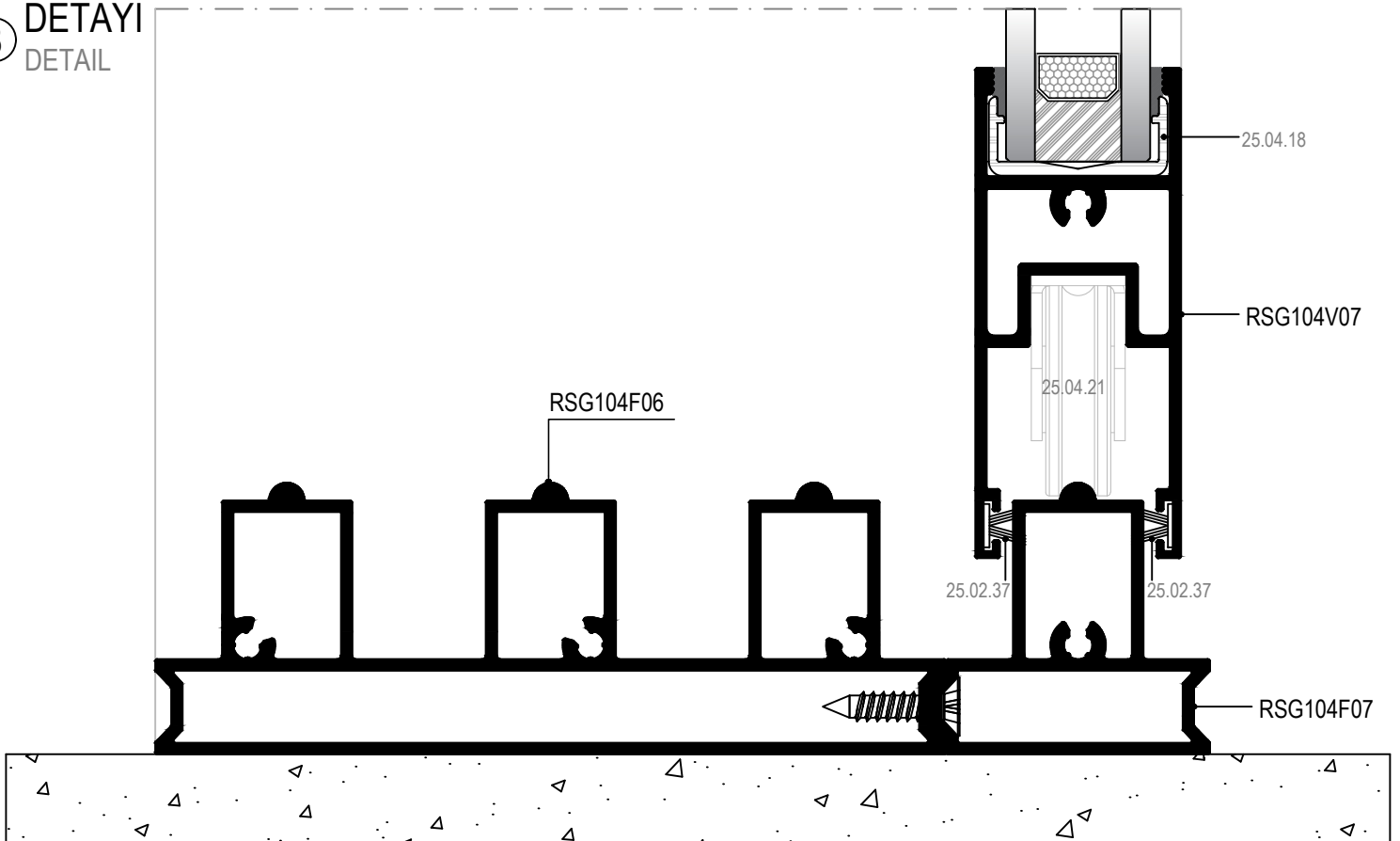


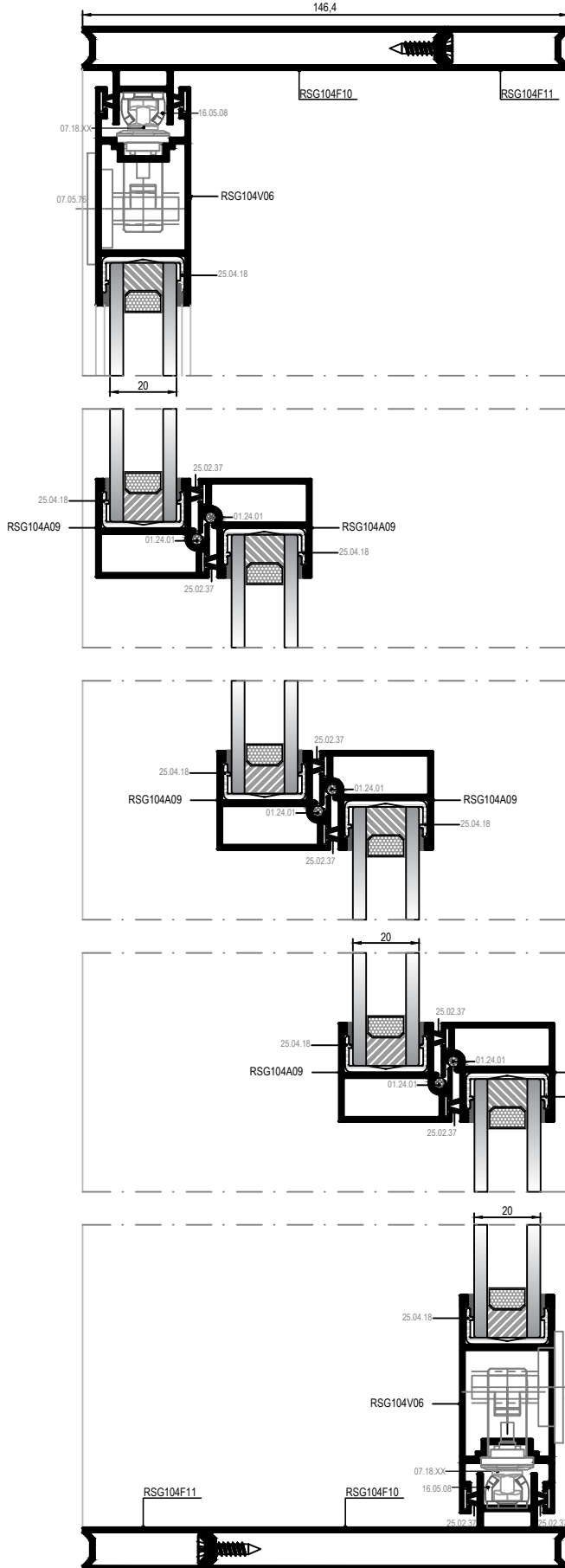
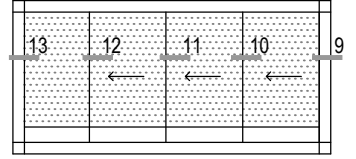


⑦ DETAYI
DETAIL



⑧ DETAYI
DETAIL





⑨ DETAYI
DETAIL

⑩ DETAYI
DETAIL

⑪ DETAYI
DETAIL

⑫ DETAYI
DETAIL

⑬ DETAYI
DETAIL

ÖLÇEK: 1/2
SCALE: 1/2


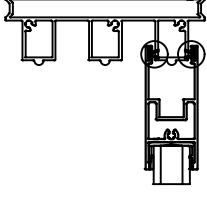

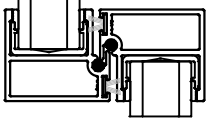
MİMARİ KATALOG
ARCHITECTURAL CATALOGUE

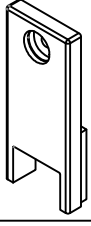
Alüminyum Konvansiyonel Sistemleri
Aluminium Conventional Systems

RSG104+

AKSESUARLAR

ACCESSORIES

	25.02.37 KIL FİTİL BRUSH				
	01.24.01 MT-216 A KENET FİTİLİ CENTRAL GASKET Malzeme / Material : EPDM Ağırlık / Weight : 10 gr/m Paket / Package: 1500 m / 15 kg				



25.04.19

KENET VE KANAT BİRLEŞTİRME KAPAĞI
CONNECTION CAP FOR CENTRAL AND SASH

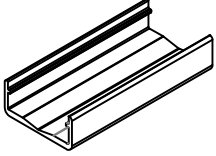
Malzeme / Material : PVC



25.04.20

KANAT BİRLEŞTİRME KAPAĞI (KOL TARAFI)
CONNECTION CAP FOR SASH (HANDLE SIDE)

Malzeme / Material : PVC



25.04.18

CAM TAKOZU
GLASS SUPPORT

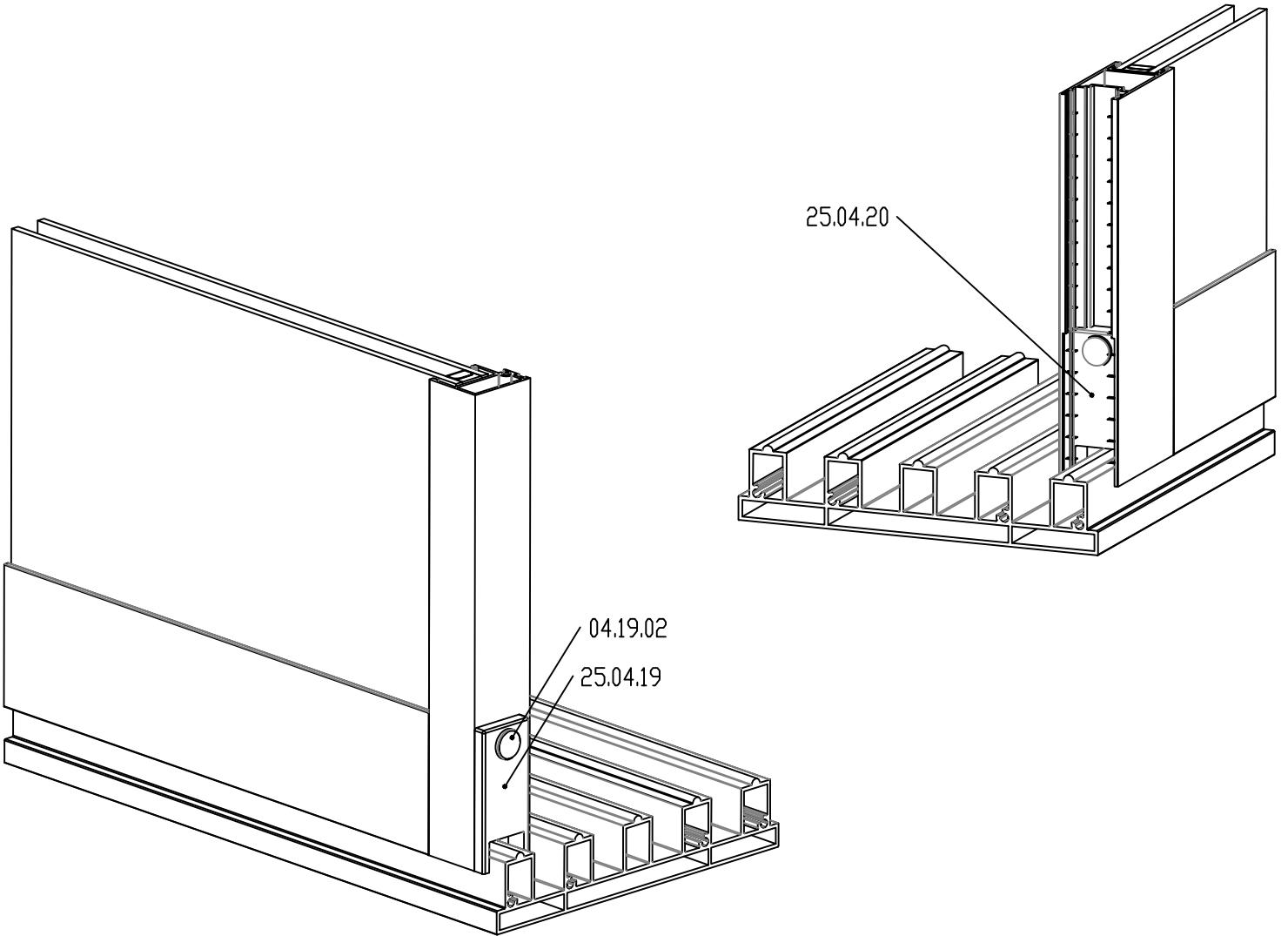
Malzeme / Material : PVC



04.19.02

VİDA TAPASI
SCREW PLUG

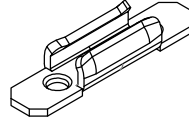
Malzeme / Material : PVC





07.05.76

GİZLİ PENCERE KOLU
HIDDEN HANDLE



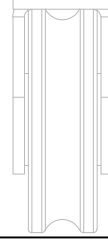
16.05.08

SÜRME KİLİT KARŞILIĞI
STRIKER FOR SLIDING LOCK

07.18.XX

22 EKSEN SÜRME İSPANYOLETİ
22 AXIS STEEL GEARBOX SLIDING ESPOGNOLETTE

Renk / Colour : Siyah-Beyaz-Gri
Black-White-Grey



25.04.21

AYARLI ÇİFTLİ RULMAN
CARRERA 2 PULLEYS

2 Adet 180 kg taşıyır. / 180 kg with 2 pulleys

07.18.xx 22 EKSEN SÜRME İSPANYOLETİ

07.18.xx 22 AXIS STEEL GEARBOX SLIDING ESPOGNOLETTE

KOD CODE	ÖLÇÜ DIMENSION
07.18.24	h: 600mm-800mm / 22
07.18.25	h: 800mm-1000mm / 22
07.18.26	h: 1000mm-1200mm / 22
07.18.27	h: 1200mm-1400mm / 22
07.18.28	h: 1400mm-1600mm / 22
07.18.29	h: 1600mm-1800mm / 22
07.18.30	h: 1800mm-2000mm / 22
07.18.31	h: 2000mm-2200mm / 22

